



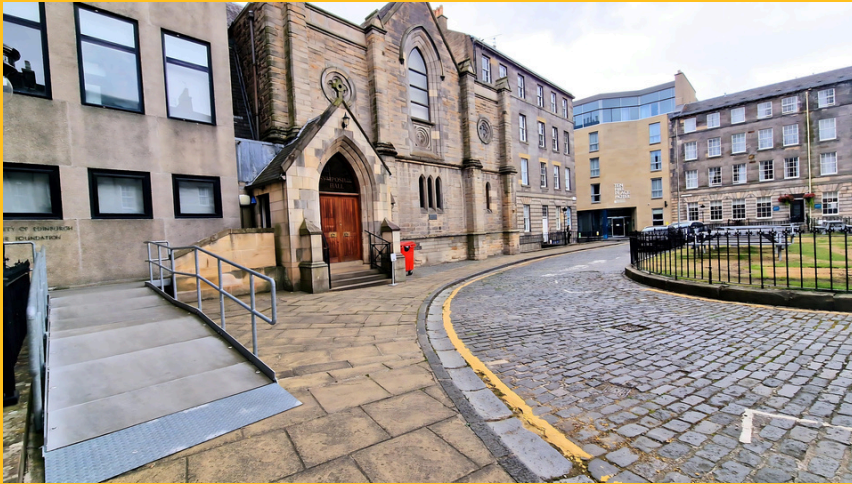
THE ROYAL COLLEGE OF SURGEONS OF EDINBURGH

# Events Buildings ACCESSIBILITY REPORT

SURGEONS QUARTER

2024

# SYMPOSIUM BUILDING



## Access

Access to the Symposium Building from street level is via the lowered kerb at Ten Hill Place/ Nicolson Street. Following the pavement around Hill Square to the main entrance, access into the building is via the metal ramp.

## Meeting room access

Reception area and **Alister Duff** room are accessible via a double automatic door.

Access to **the Auditorium** on the first floor is via the lift situated to the left of the reception area entrance. Once exiting the lift on level 1 follow the corridor round to the auditorium entrance which is via singular pull door. There are ten chairs on the first row of the auditorium for accessible users.

**The Auditorium Stage** access is via three steps up to the main stage level.

## Accessible toilets

Toilets are on the ground floor positioned to the rear of the reception area, accessible via the reception area rear singular door.

## Fire exit

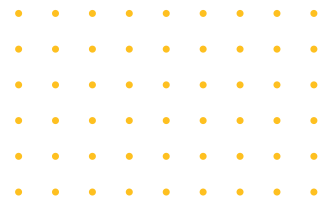
The fire exit to the rear of the Symposium is to Roxburgh Place via two steps. An Evacuation Chair is available on the 1st floor outside the Auditorium accessible entrance to assist with exiting down these steps.

## Lift





# PRINCE PHILIP BUILDING



## Access

Access to the Prince Philip Building (PPB) from street level is via the lowered kerb at Ten Hill Place/ Nicolson Street. Following the pavement through the main South Gate to the main college gardens entrance, access into the PPB via the main paved walkway is via two pull doors, accessibility access is available via call point system.



## Meeting room access

Once into the building direct access is then via a set of double doors into the **Charter Suite**

The Lift gives full access to the **Prince Philip Lower** on level -1

Access the **Deacons Suite** via Lift. Once exiting the Lift on Level 1 there is a small ramp to unrestricted access directly into the suite and bar area

## Accessible toilets

Accessible toilets are available on the main ground floor accessed via a single pull door adjacent to the main reception area into a communal stairwell near to the lift.

## Fire exit

The Fire exits are all onto Hill Place via two steps from the Charter Suite. The fire exit is via a stairwell front and rear from the Deacons Suite and a stairwell front and rear from the PPB Lower room up to street level. NO evacuation chairs are present in the PPB.



# PLAYFAIR BUILDING

## Access

Access to the Playfair Building from street level is via the lowered kerb at Ten Hill Place/ Nicolson Street. Following the pavement through the main South or North Gate to the main college gardens entrance, access into the Playfair is via the main paved walkway to the main museum atrium/college reception, via two automatic doors.

## Meeting room access

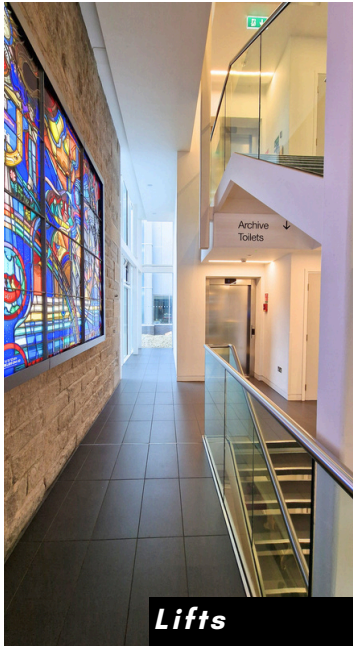
Access to the **Committee Room**, **Logan Turner**, **Reception Room** and **Library** are all via double doors to the left of the main atrium entrance, all are on the ground floor and have wheelchair access. Access to these rooms is via the Main RCSEd reception. Doors are on a Paxton key system.

Access can also be gained to the **Bell** and **Conan Doyle** Rooms via this accessible ramp, both rooms are to the rear of the RCSEd reception area.

The main **RCSEd reception** is to the right of the main doors via a set of double pull doors, access is then via ramp to the reception desk.







**Lifts**



**Museum corridor**



**Entrance to Playfair Hall**

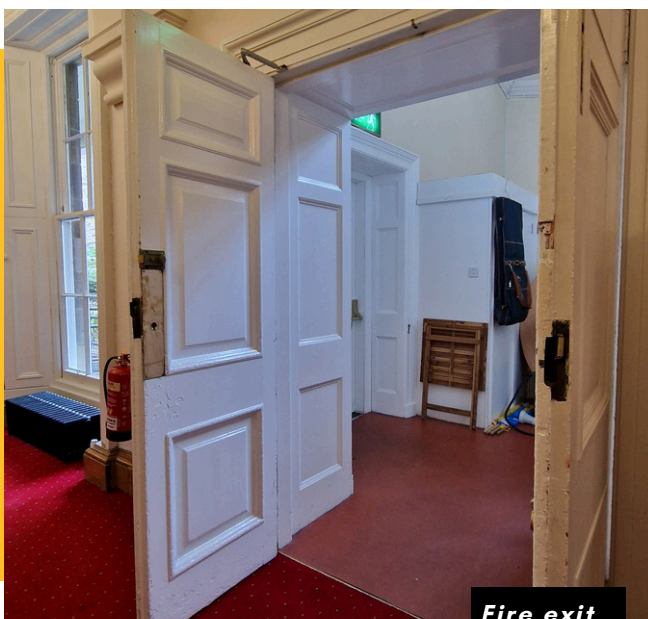
**Playfair Hall** is on Level 1 access is via the main museum lift situated to the rear of atrium entrance.

On Level 1 exit the lift following the corridor around to the main museum entrance, through the museum floor to the rear .

**Playfair hall** entrance is via a set of glass double doors museum side and double wooden doors Playfair side.

## Accessible toilets

Accessible toilets are situated on the ground floor to the left of the revolving doors



**Fire exit**

## Fire exit

Fire exits are situated to the North of the Playfair building, Evacuation Chairs are situated on Level 1, to right of the rear fire exit stairwell, exiting via two double wooden doors on ground level via a ramp into the Quincentenary Courtyard area

# QUINCENTENARY BUILDING



*Ramp to the Quincentenary*

## Access

Access to the Quincentenary Building from street level is via the lowered kerb at Ten Hill Place/ Nicolson Street. Following the pavement through the main North Gate to the main college courtyard entrance, access into the building is via a ramp from street level up to Quincentenary entrance level.



*Entrance*

## Meeting room access

Access to the **GB Ong**, **Wadsworth**, **Tausend** and **Hub** rooms are all via double entrance pull doors, accessibility access is available via call point system. All are on the ground floor and GB Ong, Wadsworth and Tausend have wheelchair access via two wooden double pull doors.

**Wolfson Hall** is on Level 1 with access via the main lift situated to the left of the main reception entrance. On Level 1 exit the lift following the corridor around to the main entrance, entrance is via a set of wooden singular doors.

## Accessible toilets

Accessible toilets are situated on both the ground and first floors to the rear of the reception area on ground floor and to the rear of the Wolfson Hall on the first floor.

## Fire exit

Fire exits are situated to the rear of the Quin building, Evacuation Chairs are situated on Level 1, to the left of the rear fire exit stairwell, exiting via singular wooden doors on both first and ground level via a ramp into a rear Courtyard area, this area leads out via a push to exit system onto Drummond Street





# SURGEONS QUARTER

EDINBURGH

